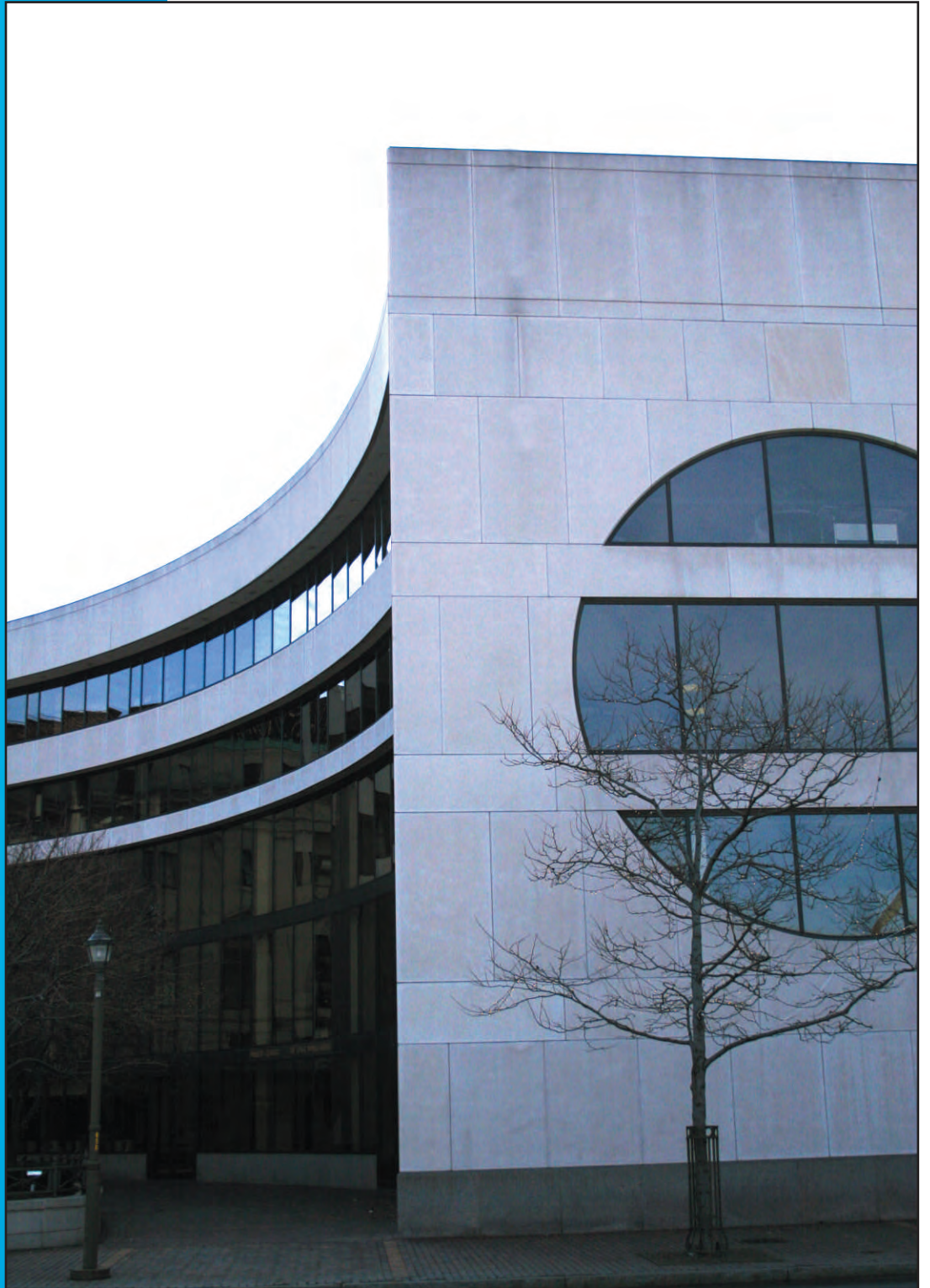


UNIVERSITY OF
ROCHESTER
EASTMAN PLACE
Rochester, NY



WILMORITE

UNIVERSITY OF ROCHESTER EASTMAN PLACE

Rochester, NY

Owner

University of Rochester
Rochester, NY
Phone: (585)275-8356

Architect

Chaintreuil | Jensen | Stark
Architects, LLC
Buffalo, NY
Phone: (716)856-6448
www.cjsarchitects.com

Project Value

\$13.9M

Project Duration

March 1987-June 1988

Construction Manager

Wilmorite Construction, LLC
Rochester, NY
Phone: (585) 464-9400
www.wilmorite.com



Project Highlights

This award-winning building is a five-story, 162,000 square foot limestone clad, steel and concrete structure. Built for mixed use, it houses stores, offices, restaurants and a music library for the University of Rochester.

The library's collection of rare books and music resulted in stringent requirements for the construction of this highly controlled environment. This posed particular challenges to the design and construction team with regards to material selection and mechanical systems.

The project was finished almost \$1M under budget. This was accomplished with strict cost controls and extensive value engineering.

